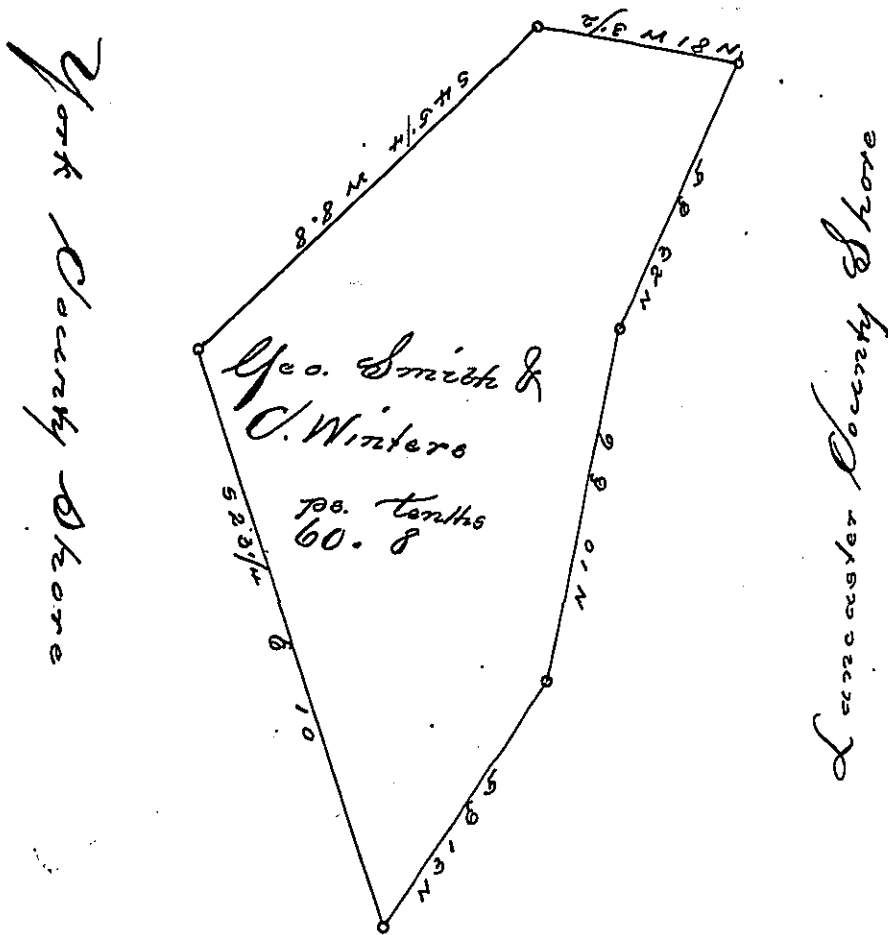


✓



A Draught of rocky Island situate in Martic Township Lancaster County opposite land of McCulloch Bridge Company on the Lancaster side & opposite to land of Benjamin Hart on the York side lying North East from steering rock about five perches on the ferry course, containing sixty perches & eight tenths, strict measure. Surveyed in pursuance of a Warrant bearing date the 7th day of September A.D. 1818. granted to George Smith and Christopher Winters

To Jacob Spangler Esq.
Surveyor General

Pr. Jacob Hiesterman D.J.

IN TESTIMONY that the above is a copy of the original remaining on file in the Department of Internal Affairs of Pennsylvania, made conformably to an Act of Assembly approved the 16th day of February, 1833, I have hereunto set my Hand and caused the Seal of said Department to be affixed at Harrisburg, this fourth day of July 1899.

James W. Jatta
Secretary of Internal Affairs.